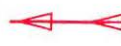



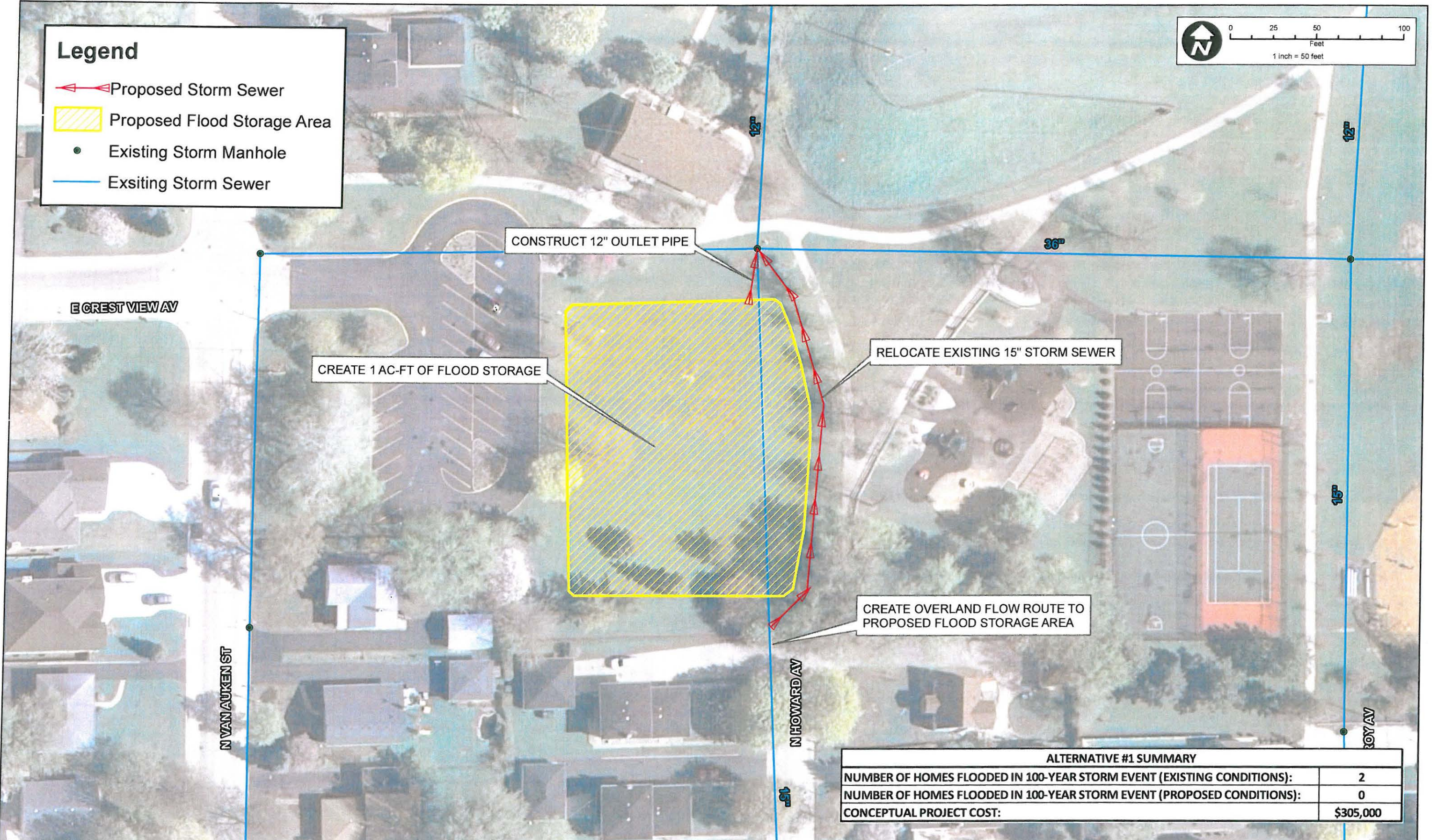
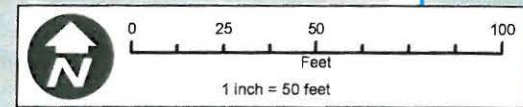


Legend

-  Proposed Storm Sewer
-  Proposed Flood Storage Area
-  Existing Storm Manhole
-  Existing Storm Sewer



ALTERNATIVE #1 SUMMARY	
NUMBER OF HOMES FLOODED IN 100-YEAR STORM EVENT (EXISTING CONDITIONS):	2
NUMBER OF HOMES FLOODED IN 100-YEAR STORM EVENT (PROPOSED CONDITIONS):	0
CONCEPTUAL PROJECT COST:	\$305,000

CHRISTOPHER B. BURKE ENGINEERING LTD.
 9575 West Higgins Road, Suite 600
 Rosemont, Illinois 60018
 (847) 823-0500

CLIENT: **CITY OF ELMHURST**

NO.	DATE	NATURE OF REVISION	CHKD.	MODEL

TITLE: **CRESTVIEW PARK STUDY AREA
 PROPOSED DRAINAGE ALTERNATIVE #1**

PROJ. NO. 100506.00004
 DATE:
 SHEET 1 OF 1
 DRAWING NO. **EXH 3C**