



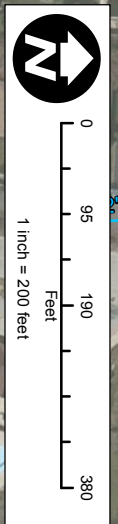
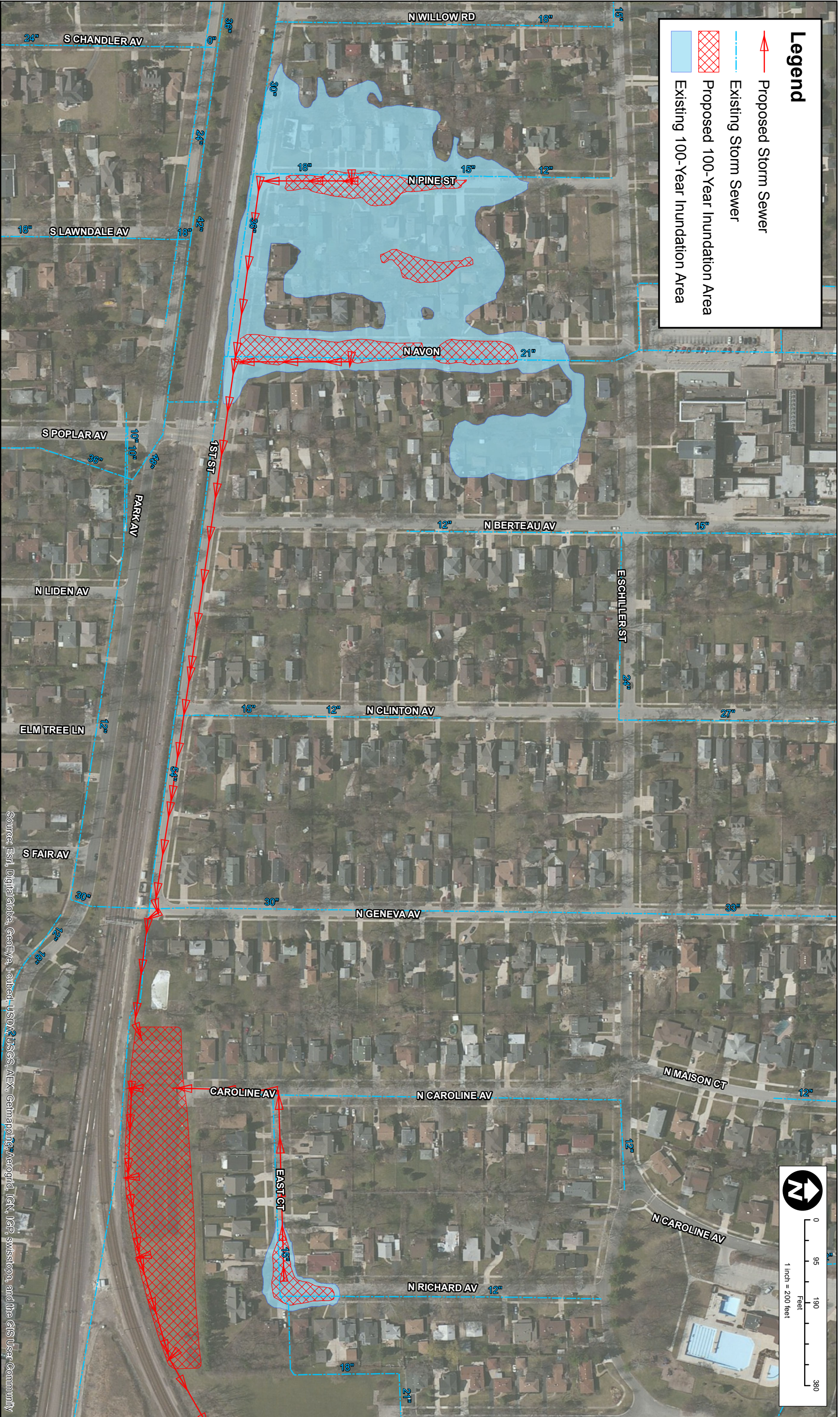


**Legend**

-  Proposed Storm Sewer
-  Existing Storm Sewer
-  Proposed 100-Year Inundation Area
-  Existing 100-Year Inundation Area



**CHRISTOPHER B. BURKE** ENGINEERING LTD.  
 9575 West Higgins Road, Suite 600  
 Rosemont, Illinois 60018  
 (847) 823-0500

CLIENT:

**CITY OF ELMHURST**

| NO. | DATE | NATURE OF REVISION | CHKD. | MODEL |
|-----|------|--------------------|-------|-------|
|     |      |                    |       |       |
|     |      |                    |       |       |
|     |      |                    |       |       |
|     |      |                    |       |       |
|     |      |                    |       |       |

TITLE:  
**GOLDEN MEADOWS PARK  
 STORMWATER IMPROVEMENTS PROJECT  
 100-YEAR INUNDATION AREA EXHIBIT**

|                   |
|-------------------|
| PROJ. NO. 15-0062 |
| DATE:             |
| SHEET 1 OF 1      |
| DRAWING NO.       |
| <b>EXH 2B</b>     |

Source: Esri, DigitalGlobe, GeoEye, iSat, USGS, AEX, Getmapping, Aerotri, IGN, IGP, swisstopo, and the GIS User Community