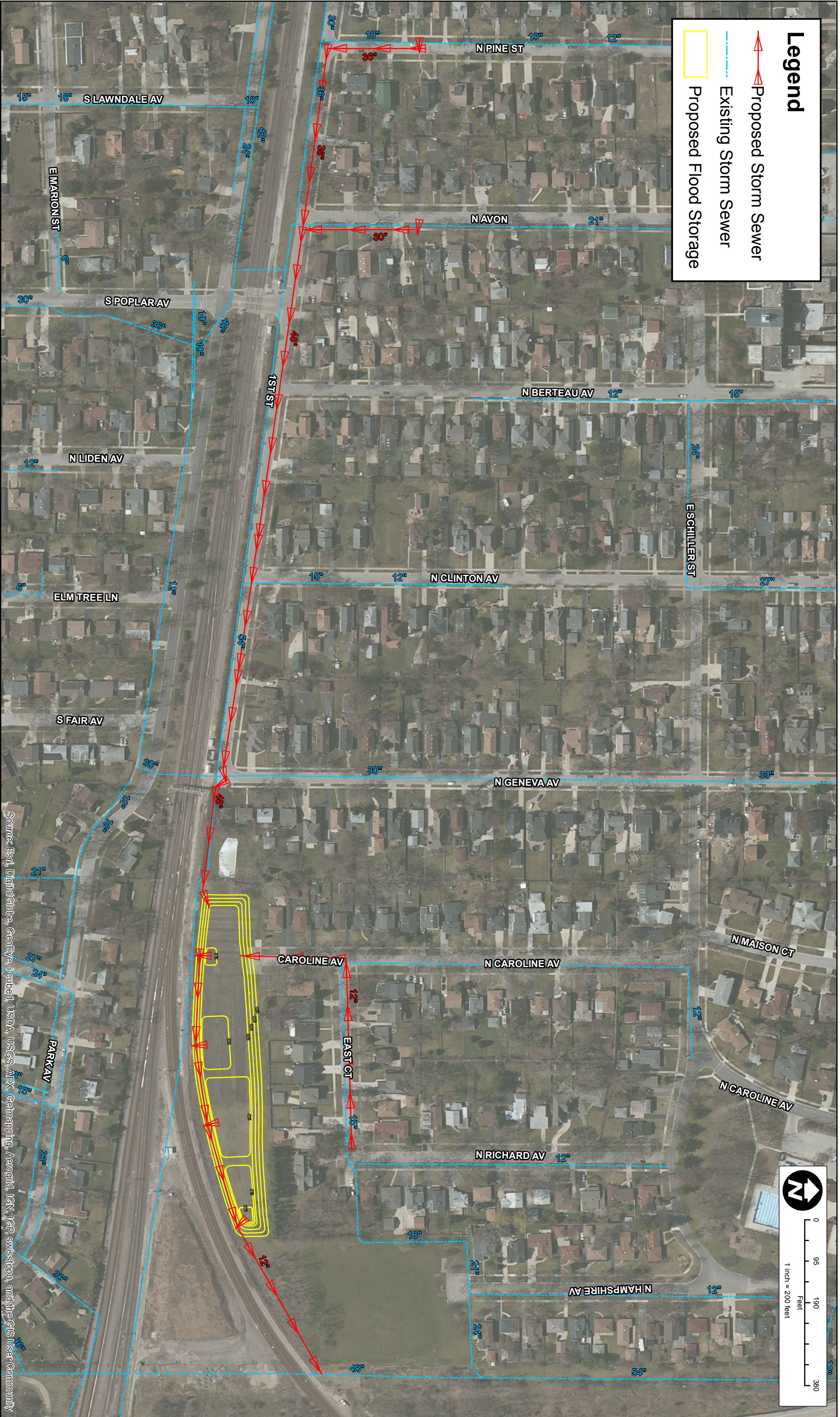


**Legend**

- Proposed Storm Sewer
- Existing Storm Sewer
- Proposed Flood Storage



Source: Esri, DigitalGlobe, GeoEye, Earthstar (USA), Airphoto, USDA, USGS, AeroGRID, IGN, SDA, Intel, and the GIS User Community

**CHRISTOPHER B. BURKE** ENGINEERING LTD.  
 9575 West Higgins Road, Suite 600  
 Rosemont, Illinois 60018  
 (847) 823-0500

CLIENT:  
**CITY OF ELMHURST**

NO.	DATE	NATURE OF REVISION	CHKD.	MODEL

TITLE:  
**GOLDEN MEADOWS PARK  
 STORMWATER IMPROVEMENTS PROJECT  
 STORM SEWER ROUTING EXHIBIT**

PROJ. NO.: 15-0062  
 DATE: \_\_\_\_\_  
 SHEET: 1 OF 1  
 DRAWING NO.: \_\_\_\_\_  
**EXH 2A**