

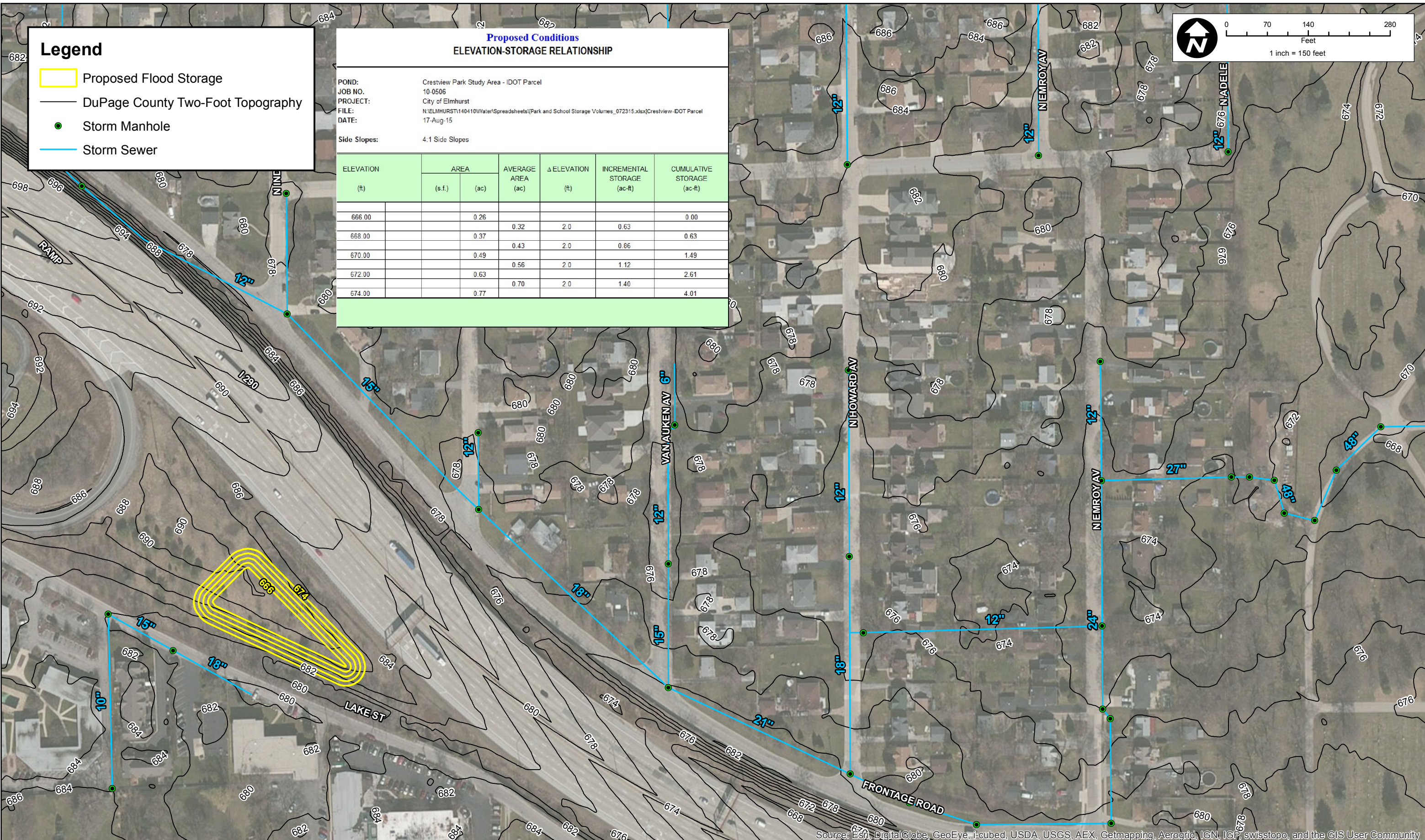
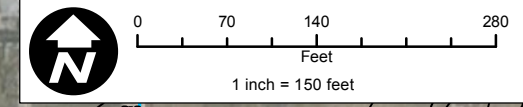
# Legend

- Proposed Flood Storage
- DuPage County Two-Foot Topography
- Storm Manhole
- Storm Sewer

## Proposed Conditions ELEVATION-STORAGE RELATIONSHIP

POND: Crestview Park Study Area - IDOT Parcel  
 JOB NO.: 10-0506  
 PROJECT: City of Elmhurst  
 FILE: N:\ELMHURST\140410\Water\Spreadsheets\Park and School Storage Volumes\_072315.xlsx\Crestview- IDOT Parcel  
 DATE: 17-Aug-15  
 Side Slopes: 4:1 Side Slopes

ELEVATION (ft)	AREA		AVERAGE AREA (ac)	Δ ELEVATION (ft)	INCREMENTAL STORAGE (ac-ft)	CUMULATIVE STORAGE (ac-ft)
	(s.f.)	(ac)				
666.00		0.26				0.00
668.00		0.37	0.32	2.0	0.63	0.63
670.00		0.49	0.43	2.0	0.86	1.49
672.00		0.63	0.56	2.0	1.12	2.61
674.00		0.77	0.70	2.0	1.40	4.01



Source: Esri, DigitalGlobe, GeoEye, i-cubed, USDA, USGS, AEX, Getmapping, Aerogrid, IGN, IGP, swisstopo, and the GIS User Community

**CHRISTOPHER B. BURKE** ENGINEERING LTD.

9575 West Higgins Road, Suite 600  
Rosemont, Illinois 60018  
(847) 823-0500

CLIENT: **CITY OF ELMHURST**

NO.	DATE	NATURE OF REVISION	CHKD.	MODEL

TITLE: **CRESTVIEW PARK STUDY AREA  
FLOOD STORAGE ON IDOT PARCEL  
CONCEPTUAL GRADING PLAN**

PROJ. NO. 14-0410  
 DATE:   
 SHEET 1 OF 1  
 DRAWING NO.  
**EXH**