

**MINUTES OF THE REGULAR MEETING OF THE  
ELMHURST PARK DISTRICT  
BOARD OF COMMISSIONERS  
May 8, 2013  
7:30 p.m.**

Minutes of the Regular Meeting of the Elmhurst Park District Board of Commissioners held on Wednesday, May 8, 2013 at the Administrative Offices, 375 West First Street, Elmhurst, IL. Prior notice of the meeting was posted. The meeting was called to order by Board President Kubiesa at 7:30 p.m.

Board President Kubiesa announced that Commissioner Pelosi requested to attend the Board meeting via electronic means (speaker phone) due to illness. Commissioner Morissette-Moll made a motion that Commissioner Anthony Pelosi be permitted to attend the May 8, 2013 Regular Meeting via electronic means in accordance with Board Policy 5.16. Commissioner Kies seconded the motion. All voting conducted during the meeting will be by roll call vote. As there was no further discussion, the Board was polled. Ayes: Commissioners Howard, Kies, Morissette-Moll, Spaeth, Ubriaco, Kubiesa. Nays: None. Motion passed unanimously.

**Present:** Commissioners Howard, Kies, Morissette-Moll, Pelosi (via electronic means phone), Spaeth, Ubriaco, and Kubiesa.

Commissioner Howard left the Board meeting at 10:26 p.m.

**Absent:** None

**Staff Present:** James W. Rogers, Executive Director  
Dave Kenny, Director of Information Technology  
Brian McDermott, Director of Enterprise Services  
Cathy Medema, Director of Finance & Human Resources  
Cindy Szkolka, Director of Recreation  
Ginger Wade, Director of Marketing & Communications  
Anne Scheppele, Division Manager- Facilities

**Visitors:** Karen Chadra, Elmhurst Patch News

**ADDITIONS/DELETIONS/CHANGES TO AGENDA**

None

**REMARKS/CORRESPONDENCE FROM VISITORS**

Board President Kubiesa read correspondence received from Helen Stannard, Representative Pat Bellock's secretary in Springfield, IL:

*Thank you so much for the darling bag you gave me when you stopped to visit with Representative Bellock! It was very thoughtful and was great to see you again!! Helen Stannard.*

Roz Long, RGL Marketing for the Arts, Inc., wrote:

*Dear Jim and the Elmhurst Park District Board,  
Thank you very much for the wonderful partnership with RGL Marketing for the Arts, Inc. Elmhurst's 17<sup>th</sup> Annual Art in the Park was an incredible success. In fact, by far, it was my most successful.  
Of course, the perfect weather made a huge difference in the 10,000 plus people attending. The artists loved the beautiful park and the Wilder Mansion.  
I want to thank everyone involved with Art in the Park. Special thanks to Ginger - Marketing, Brian - Mansion, Dave - Maintenance, Ken Heflin - Supervisor of Maintenance, Meagan - Facility Mansion Supervisor, and Grant - Graphic Design.  
You should be very proud of your team. It was such a pleasure to work with them.  
Looking forward to the 18th! Warm regards, Roz*

Commissioner Kies presented Board President Kubiesa with a certificate of appreciation from the Illinois Association of Park Districts (IAPD) for her 15 years of service to the Park Board.

### **Committee Reports**

#### **Elmhurst Art Museum – Szkolka**

- The 2013 Soiree netted \$73,000 and a gross of \$145,000 for the evening.
- Faith Humphrey Hill is the new Director of Education and Outreach. She will be working on the cooperative agreement and working closely with the curator. She has arranged for a children's activity at the Museum's new exhibit.
- Grant funds will provide reimbursement at the halfway point for repairs to the leaking roof and interior lighting.
- The Museum is now open on Sundays from noon to 5 p.m.

#### **Gateway – Szkolka**

- The Board has agreed on a contract with RGA. The agreement will be a five-year term, with limits on annual increases and includes a termination clause. The five-year term will allow RGA to make some longer term investments in the Gateway program.
- We began discussions on the 2013-14 fiscal year budget. RGA proposes a 1% increase on their end of the contract and the Board is looking to hold the line at a 1-1/2% increase on the budget overall.

#### **PEP - Pelosi**

- Golfers are still needed for the golf outing on May 17. Donations for raffle prizes are also needed.
- Meatheads, the new burger place, planned on donating a portion of sale proceeds on April 18 to the Recreation Assistance Fund, but that happened to be the same day as the storm. Therefore, they are planning a redo for us.
- There will no longer be a Joanne B. Wagner Scholarship as funding is nearly depleted. The Wagner family would like to do something else for the District in memory of Joanne B. Wagner. Ideas for utilizing the funds for the District are being developed.

**Upcoming Committee Meetings**

Gateway – May 9, 2013  
Lizzadro – May 9, 2013  
Sugar Creek Golf Course – May 28, 2013  
Elmhurst Art Museum – June 19, 2013  
PEP – June 20, 2013  
Park/City/School – July 8, 2013

**CONSENT AGENDA**

Commissioner Ubriaco made a motion for the Board to approve the Consent Agenda of May 8, 2013 and Commissioner Spaeth seconded the motion. The Board was polled: Ayes: Commissioners Spaeth, Ubriaco, Howard, Kies, Morissette-Moll, Pelosi, and Kubiesa. Nays: None. Motion passed unanimously.

It should be noted that the following items were approved on the Consent Agenda: Regular Meeting Minutes of April 24, 2013, and Check Registers: 05/01/13 - \$115,537.11, 4/26/13 - \$77,519.71.

**UNFINISHED BUSINESS (Old) –**

**Summer Meeting Schedule**

Commissioner Morissette-Moll made a motion that the Park Board follow the precedent set in previous years and hold the summer meetings on: June 12, July 10, and August 14, 2013. The regularly scheduled 2013 meetings will resume with the September 11, 2013 meeting. The meeting dates and agendas will be properly posted per 5ILCS 120/2.02 (a) and (b) of the Open Meetings Act. Commissioner Kies seconded the motion. As there was no further discussion, the Board was polled. Ayes: Ubriaco, Howard, Kies Morissette-Moll, Pelosi, Spaeth, and Kubiesa. Nays: None. Motion passed unanimously.

**NEW BUSINESS -**

**Preliminary Discussion of City of Elmhurst Stormwater Management Potential Solutions**

Board President Kubiesa stated that the Board will discuss and brainstorm for ideas and questions relating to the City of Elmhurst's conceptual drawings illustrating potential stormwater management solutions that suggest utilizing Park District facilities. President Kubiesa stated that although the Board would like to be part of the stormwater management solution, its responsibilities lie in protecting and maintaining its parks. City staff plans on attending the June 12, 2013 Board meeting to further discuss the plans. The plans were presented in a slideshow by Executive Director Rogers in order to enhance visualization, further explain water flow, grading, and other potential plans submitted by the City of Elmhurst. Mr. Rogers also included photos of water retention facilities at two parks at the Downers Grove Park District, which were designed by Burke Engineering. To date, the Park District sites under consideration include Golden Meadows Park, East End Park, Pioneer Park, Wild Meadows Trace, and York Commons. Commissioner Spaeth then presented a consolidated report he produced using various City of Elmhurst reports regarding stormwater management. Commissioner Spaeth's slideshow presentation is on pages 5 through 8.

The Board held an in-depth discussion throughout the presentations resulting in the following questions and ideas to pose to the City of Elmhurst staff.

Elmhurst Park District Board Meeting  
May 8, 2013

Questions:

- The fire station at York Commons has an underground storage, could it be linked/added to the list of proposed areas for water retention?
- Are retaining walls primarily for ADA?
- Would like to look at full scope of plan.
- How vital is the Park District to the whole?
- Are there plans to offer a cost-sharing program to residents for the cost of installing backflow, overhead, side yard, and/or draining systems? Grant program for glass blocks or raising driveway.
- What happens if the Park District is unable to provide the required land space? Is there eminent domain?
- How soon does the City plan on implementing the plans?
- What are the capacity issues?
- Are turf fields proposed at Golden Meadows?
- Will areas be fenced?
- Are there any safety issues in regard to depth (2 – 8 ft)?
- Will the system be pump or gravity fed at Golden Meadows? If pump, what will happen during electrical power failure?
- Will the proposed sewer line at East End be tied into the Caroline sewer? What will be the impact – positive/negative?
- What impact at East End on York's cross country running team?
- What flexibility will the District lose with the plans?
- How long will it take for water to drain?
- What is the distance of the retaining wall from the soccer field lines at Pioneer Park?
- What is water flow direction at Prairie Path and Wild Meadows Trace? How many trees will be lost?
- How many homes will benefit from proposed plans?
- If soccer fields are flooded, will there be runover to other areas?
- Will those who don't have water problems have flooding problems?
- Where are the funds for the proposed plans coming from?
- If similar plans are being used at the Downers Grove Park District, did it prevent flooding during the April 18 storm?
- Has City decided to change ordinance on impermeable surface restrictions for the proposed plans? Will new construction ordinances be developed? Are we pushing problem 10 years out?
- Terraced versus large berms?

The Park Board also proposed the following ideas:

- Placing guardrails on Seminole at Wild Meadows Trace.
- When constructing new facilities, add underground storage.
- Use of permeable pavement at York Commons, move proposed plans for York Commons to the parking lot.
- Use of Great Western Prairie Areas
- Would like to see more green alternatives addressed.
- Using Berteau Street hospital complex as an alternative.
- Eldridge Park as an option.

### Storm Water Management Elmhurst Park District Review Data Sharing & Talking Points May 8, 2013

Data from City of Elmhurst  
Reports/Contracted Engineers

### Overview

- Mission
- Goals
- History
- Major Flood Areas
- Major Options for Overland Flood Control & Other
- EPD Impact on total city effort
- Best combination of solutions???
- Summary by flood area
- Cost Summary of possible solutions
- Next Steps?

Data from City of Elmhurst  
Reports/Contracted Engineers

### Mission/Goals

Elmhurst  
City/School 205/EPD.....

- We are all here to help the residents with quality of life issues
- EPD will work with all entities to come to the best/most cost effective solutions that help the residents – they expect us to!
- EPD goal is to make sure we properly VET out all the options and then make an informed decision in the communities best interest. Each entity needs its time to understand/discuss/challenge/propose solutions and then come together with consensus for the residents!
- This information was put together to help the team share, improve understanding of the problem, understand potential solutions provided, allow for further knowledgeable discussion and then final decision making. There may be updates/changes to this information since there are many reports out there.

Data from City of Elmhurst  
Reports/Contracted Engineers

### History

- Pre 1987 – Floods all over town massive problems
- Post 1987-2000 – Creek related flooding stopped via Quarry Flood Control Project and levies
- 2000-Present - Massive more frequent rains straining flood control when storm sewers are full:
  - Overland flow and low lying concentration in 10 major areas
  - Isolated flooding of homes with sump pump back up
  - Sewer issues (being looked at separately)

Data from City of Elmhurst  
Reports/Contracted Engineers

Survey of Water Flooding 2010 Storm

10 Major overland flood areas when storm sewers back up from heavy rains and water travels overland and concentrates in low lying areas. Goal is to minimize this impact on residents!



Data from City of Elmhurst  
Reports/Contracted Engineers

### Engineering Study Flood Prone Areas

- 1) Pine Street
- 2) Geneva Avenue
- 3) York Street to Salt Creek, between Mulberry Avenue and Butterfield Road
- 4) York Street to Salt Creek, between Mulberry Avenue and Butterfield Road
- 5) Larch Avenue
- 6) Seminole Avenue
- 7) Wash Street at I-290
- 8) Brynhaven Subdivision
- 9) Elk Subdivision
- 10) Butterfield Road Area (Frontfield)



Figure 3. Location Map - Ten Flood Study Areas

Data from City of Elmhurst  
Reports/Contracted Engineers

### How do we solve overland flooding during major storms? Options?

- **River pumps** - Increase storm sewers and pumping capacity, install compensatory containment along salt creek Eldridge West & north would be perfect).
- **Parks/School Storage** - Increase storm sewer sizing from low lying flood zones and connect to parks/schools etc...
- **Share Quarry Storage** - Increase storm water sewer capacity leading to Quarry (need DuPage County approval). Would need < 1% of quarry volume to match what flooding parks would provide.
- **Elmhurst Residents Help Others** - Utilize neighbors to control tributary flooding to low lying areas. Install control berms to slow down overland conveyance of water, pull foundation/roof/yard water out of storms and put into yards. In any given area, 50%+ residents do not flood while low lying areas get > 80% of the excess water.

Data from City of Elmhurst  
Reports/Contracted Engineers

### How do we solve overland flooding during major storms (cont.)?

- **Home Flood proofing:**
  - Eliminate reverse slope driveways (50-60)?
  - Glass block window wells so level increases to foundation height
  - Sump pump water to yard not storm sewer (especially in higher elevation areas that do not flood)
  - Berms to retain water and control overland conveyance
- **New developments**
  - Elevate foundation requirement 2' higher for > 100 yr flood
  - Require on-site storage to compensate for large basements
  - Minimize impervious surface, adjust soil absorption capacity
  - Water gardens and berms

Data from City of Elmhurst  
Reports/Contracted Engineers

### EPD Park detention sites & Impact

Proposed City Water Detention to be added by High of 20 years

Park	Area Impacted	Homecount	Area Ft	Associated gpm or Capacity	Depth of Park
Golden Meadows	Pond/Synthetic	22	27	2,168,272	A
Brick Lot	Open	4	4	1,000,000	F
Pioneer Park	Synthetic	4	4	1,000,000	F
Wild Meadows Drive	Synthetic	4	2	872,283	E
Brick Commons	Croquet & Cambridge Ave	60	26	18,720,825	G
<b>TOTAL</b>		<b>96</b>	<b>63</b>	<b>12,862,380</b>	

% of Quarry capacity: 0.84%

Quarry Capacity	8200	1,794,843,200	3.7 Billion gpm
-----------------	------	---------------	-----------------

Other Areas	City of Elmhurst	City of Elmhurst	City of Elmhurst
Johnson School	W Elmhurst		
Madison School	W Elmhurst		
Lincoln School	W Elmhurst		
Wash St	Madison & Thomas		
Frontfield	Madison		

Data from City of Elmhurst  
Reports/Contracted Engineers

### Best Potential Combination of Solutions for Flooding from overland excess

- SW Elmhurst – Increase Storm Water Pump Size and install compensatory storage in Eldridge Park Area. Create new water detention along Salt Creek.
- Yorkville – Install storage area along Harrison St easement and near-by vacant lot as desired
- Pick – Install storage area and pump as desired in identified open space Monterey & Thomas St
- Washington & Seminole – Install storage area along prairie path only and to a depth so Pioneer can be left out of solution.
- Pine St – Install storage space in western end of golden meadows (garden area only & deeper) leave main park as is.
- Brynhaven – Two homes of major concern? Drain to Golden Meadows or Teardowns/New Homes with higher foundation???
- Larch St & I290 Area – Install storage space near I-290 as desired
- East End – Has always flooded, install as desired

Data from City of Elmhurst  
Reports/Contracted Engineers

### South West Elmhurst Area



Figure 4. Overview of Southwest Study Area

Data from City of Elmhurst  
Reports/Contracted Engineers

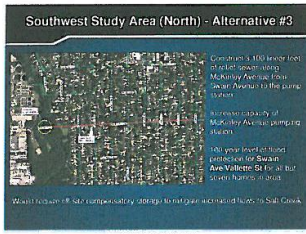
### South West Elmhurst Area

Southwest Study Areas Existing Conditions Summary

Problem Area ID	Problem Area Location	Number of Homes Within July 2013 Inundation Area*	Depth of Flooding 10'	Existing Level of Flood Protection
A	Spring Rd & Harrison St	19	2.0	2-year
B	Saylor Ave & Jackson Ave	75	2.5	5-year
C	Valley St & Swan Ave	05	1.7	2-year
D	Washington St	09	2.1	2-year
E	Croquet Ave & Cambridge Ave	62	2.2	2-year
<b>TOTAL</b>		<b>261</b>		

Data from City of Elmhurst  
Reports/Contracted Engineers

South West Elmhurst Area



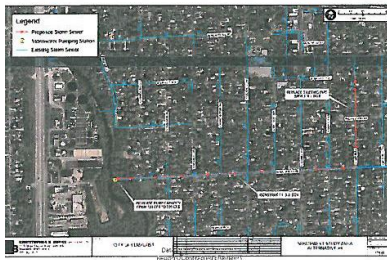
South West Elmhurst Flood Potential 2010



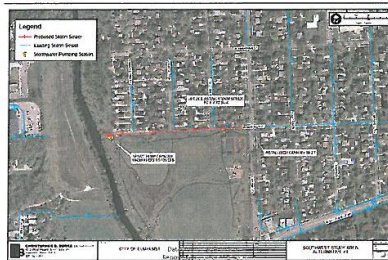
South West Elmhurst 57 Reversed Slope Driveways



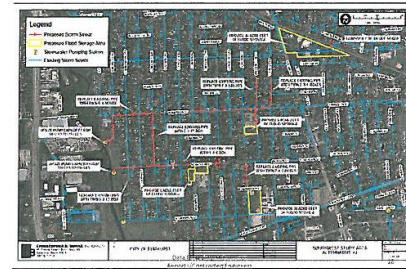
McKinley Main Sewer & Pumps



Harrison St Main Sewer & Pumps



Madison St Main Sewer & Pumps



Solving SW Elmhurst Flooding Via Increased Pumping & Storage

Storage Volume (Acres-ft)	Storage Volume (Mill. Gall.)	Depth (Feet)	Surface Area Needed (Acres)	Surface Area Needed (Feet x Feet)
134	37.1	5	134.0	2220' x 2220'
134	37.1	2	57.0	1370' x 1370'
134	37.1	5	22.8	990' x 990'
134	37.1	10	11.4	704' x 704'
134	37.1	20	5.7	490' x 490'

Football Fields: 0.5

Table 13. Summary of Required Compensatory Storage

Alternative ID	Pump Station Location	Capacity (cfs)		Storage Volume Required to Mitigate Downstream Impacts* (ac-ft)
		Existing	Proposed	
SW Alternative #2	Barkley & Adams	507	313	30
SW Alternative #3	Madison Street	134	238	30
SW Alternative #4	Harrison Street	43	123	30
SW Alternative #4	Madison Avenue	134	190	34
<b>Total</b>		<b>818</b>	<b>664</b>	<b>124</b>

Potential compensatory storage areas. Does not include Quarry use.



Eldridge Park – Potential Compensatory Storage Areas

Can add compensatory water storage near Eldridge Field in multiple locations:  
 • Existing Reservoir  
 • Eldridge West  
 • Eldridge North  
 Harrison St. Storm Water pump is very close!

Benefits:  
 • Main Parks/Schools are not reservoirs  
 • Net Positive removal of water



Impact of Newer Homes (teardowns)

- > 2000 homes since 1990 out of 14,000 total?
- Directly connected Impervious Areas (DCIA). 32% average increase in total flow from lot into storm sewer. This increases overland flooding during major storms
- Also, these newer homes are prone to sump pump back up flooding when pumped to storm.

Lot ID	Address	Area (sq ft)	% Impervious	Pre-Construction Flow (cfs)	Post-Construction Flow (cfs)	Change (cfs)
1	1234 Main St	1000	10%	10	10	0
2	5678 Main St	1500	15%	15	15	0
3	9012 Main St	2000	20%	20	20	0
4	3456 Main St	2500	25%	25	25	0
5	7890 Main St	3000	30%	30	30	0
6	1122 Main St	3500	35%	35	35	0
7	4455 Main St	4000	40%	40	40	0
8	7788 Main St	4500	45%	45	45	0
9	1011 Main St	5000	50%	50	50	0
10	2233 Main St	5500	55%	55	55	0
11	5566 Main St	6000	60%	60	60	0
12	8899 Main St	6500	65%	65	65	0
13	1212 Main St	7000	70%	70	70	0
14	4545 Main St	7500	75%	75	75	0
15	7878 Main St	8000	80%	80	80	0
16	1101 Main St	8500	85%	85	85	0
17	3434 Main St	9000	90%	90	90	0
18	6767 Main St	9500	95%	95	95	0
19	9090 Main St	10000	100%	100	100	0
<b>Total</b>		<b>14000</b>	<b>50%</b>	<b>1400</b>	<b>1400</b>	<b>0</b>

Washington/Seminole Area



Washington/Seminole Flood Potential 2010



Washington/Seminole Detention



Yorkfield Area



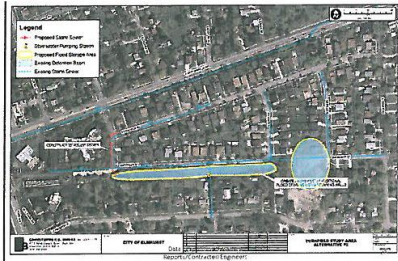
Figure 22. Overview of Yorkfield Sub-Area Study Area

Yorkfield Flood Potential 2010



Figure 23. Yorkfield XP-SWMM Simulated Inundation Area - July 2010 Storm Event

Yorkfield Detention



Pine Street Area



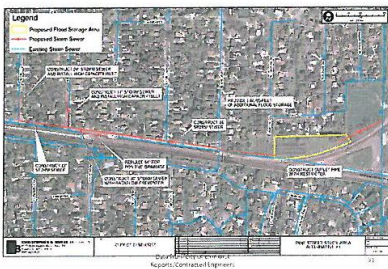
Figure 5. Overview of Pine Street Study Area

Pine Street Flood Potential 2010



Figure 6. Pine Street XP-SWMM Simulated Inundation Area - July 2010 Storm Event

Pine Street Detention – Western Golden Meadows



Brynhaven Area

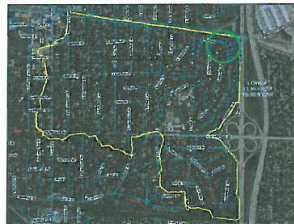


Figure 18. Brynhaven Sub-Area Study Area Underlined Boundary

Brynhaven Flood Potential 2010



Figure 20. Brynhaven XP-SWMM Simulated Inundation Area - July 2010 Storm Event

Brynhaven Area Detention

Add to Golden Meadows  
 or  
 Remove two houses prone to flooding

Geneva St/East End Area

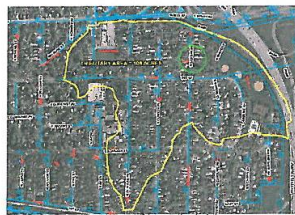


Figure 7. Overview of Geneva Avenue Study Area

Geneva St/East End Flood Potential 2010

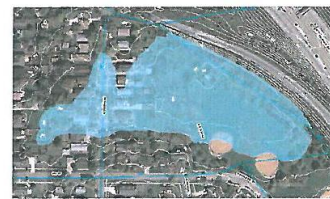


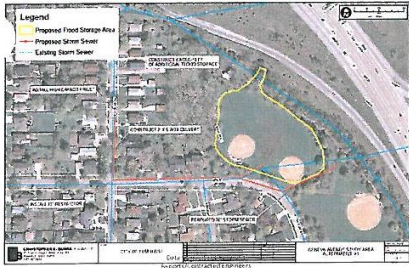
Figure 8. Geneva Avenue XP-SWMM Simulated Inundation Area - July 2010 Storm Event

Data from City of Elmhurst Reports/Contracted Engineers

Data from City of Elmhurst Reports/Contracted Engineers

Data from City of Elmhurst Reports/Contracted Engineers

Geneva St/East End Detention



Pick Subdivision Area



Pick Subdivision – Water Flood Potential 2010



Figure 20. Overview of Pick Subdivision

Figure 21. Pick Subdivision XP-SWMM Simulated Inundation Area – July 2010 Storm Event

Data from City of Elmhurst Report/Contracted Engineers

Data from City of Elmhurst Report/Contracted Engineers

Pick Subdivision – New Detention Monterey & Thomas Streets



North Larch Street Area



North Larch Street – Flood Potential 2010



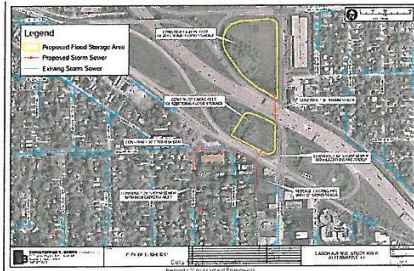
Figure 12. Overview of Larch Avenue Study Area

Figure 13. Larch Avenue XP-SWMM Simulated Inundation Area – July 2010 Storm Event

Data from City of Elmhurst Report/Contracted Engineers

Data from City of Elmhurst Report/Contracted Engineers

North Larch Street – to I-290 areas



York I290 Area



York I290 Potential Flooding 2010



Figure 16. Overview of York Street/I-290 Study Area

Figure 17. York Street/I-290 XP-SWMM Simulated Inundation Area – July 2010 Storm Event

Data from City of Elmhurst Report/Contracted Engineers

Data from City of Elmhurst Report/Contracted Engineers

Proposed Major Capital/Land Improvements vs Individual Home Improvements  
 Major Cost/Home Difference

Address/ID	# of Homes	Proposed Major Improvements Cost (Current)	Local Cost	Home Improvements Cost (Current)	Local Cost
Northwood #1	58	\$45,700	\$4,570,000	\$4,570,000	\$4,570,000
Northwood #2	25	\$33,000	\$8,250,000	\$8,250,000	\$8,250,000
Northwood #3	17	\$19,500	\$3,315,000	\$3,315,000	\$3,315,000
Northwood #4	10	\$11,000	\$1,100,000	\$1,100,000	\$1,100,000
Northwood #5	20	\$12,000	\$2,400,000	\$2,400,000	\$2,400,000
Northwood #6	8	\$10,000	\$800,000	\$800,000	\$800,000
Northwood #7	5	\$6,000	\$300,000	\$300,000	\$300,000
Northwood #8	12	\$12,000	\$1,440,000	\$1,440,000	\$1,440,000
Northwood #9	2	\$20,000	\$40,000	\$40,000	\$40,000
Northwood #10	1	\$10,000	\$10,000	\$10,000	\$10,000
Northwood #11	3	\$12,000	\$36,000	\$36,000	\$36,000
Northwood #12	4	\$10,000	\$40,000	\$40,000	\$40,000
Northwood #13	10	\$6,000	\$60,000	\$60,000	\$60,000
Northwood #14	11	\$10,000	\$110,000	\$110,000	\$110,000
<b>TOTAL: 581</b>			<b>\$11,000,000</b>	<b>\$11,000,000</b>	<b>\$11,000,000</b>

Next Steps????

- Digest all the data
- Talk to other entities/agencies
- Talk to community
- Confirm Potential Solutions & Costs
- Plus/Minus for now and future expansion of schools/parks.....
- Additional presentations
- Make Decision of path forward

Data from City of Elmhurst Report/Contracted Engineers



Commissioner Howard left the meeting at 10:26 p.m.

**COMMISSIONER INFORMATION ITEMS –**

**Announcements**

None

**Future Agenda**

None

**STAFF ANNOUNCEMENTS**

**Executive Director – Rogers**

- Distributed Open House handout to the Board. I encourage Commissioners to attend both the Chamber and Public Administrative Office open houses.
- Provided copies of PDRMA's Annual Report.

**ADJOURNMENT**

There being no further discussion, Commissioner Morissette-Moll moved to adjourn at 10:27 p.m. and Commissioner Kies seconded the motion. The Board was polled. Ayes: Kies, Morissette-Moll, Pelosi, Spaeth, Ubriaco, Kubiesa. Nays: None. Motion passed unanimously.

The next regularly scheduled meeting will be held on Wednesday, May 22, 2013 at 7:00 p.m. at the Administrative Office Board Room, 375 West First Street, Elmhurst, IL. Prior notice will be posted.

Note: Roll call voting will start with Commissioner Ubriaco at the May 22, 2013 Park Board meeting.

---

Colette Kubiesa, Board President

---

Nimfa Melesio, Recording Secretary