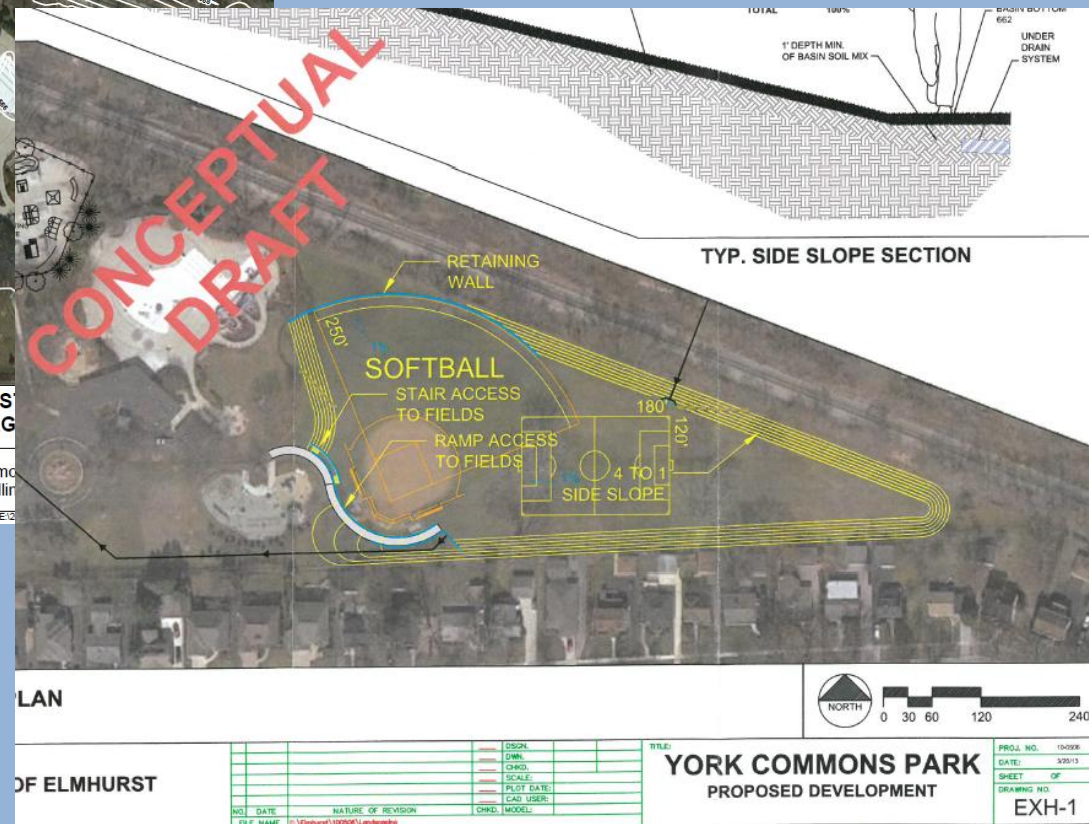
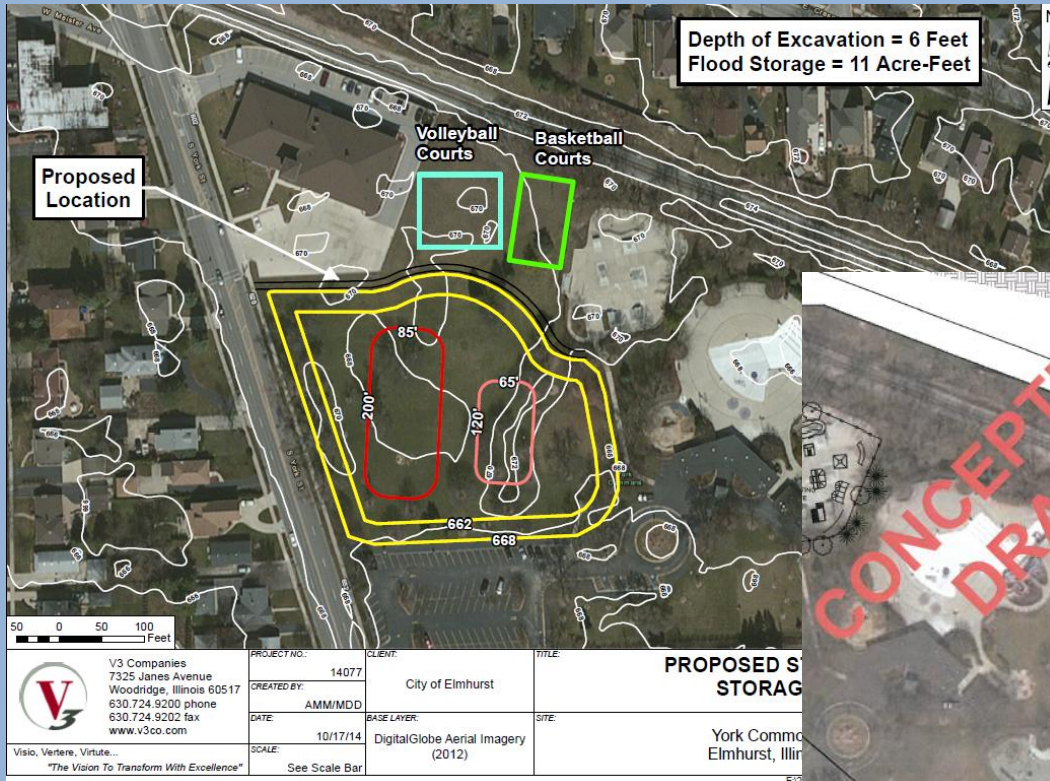


# Reconsideration of York Commons - East Lobe

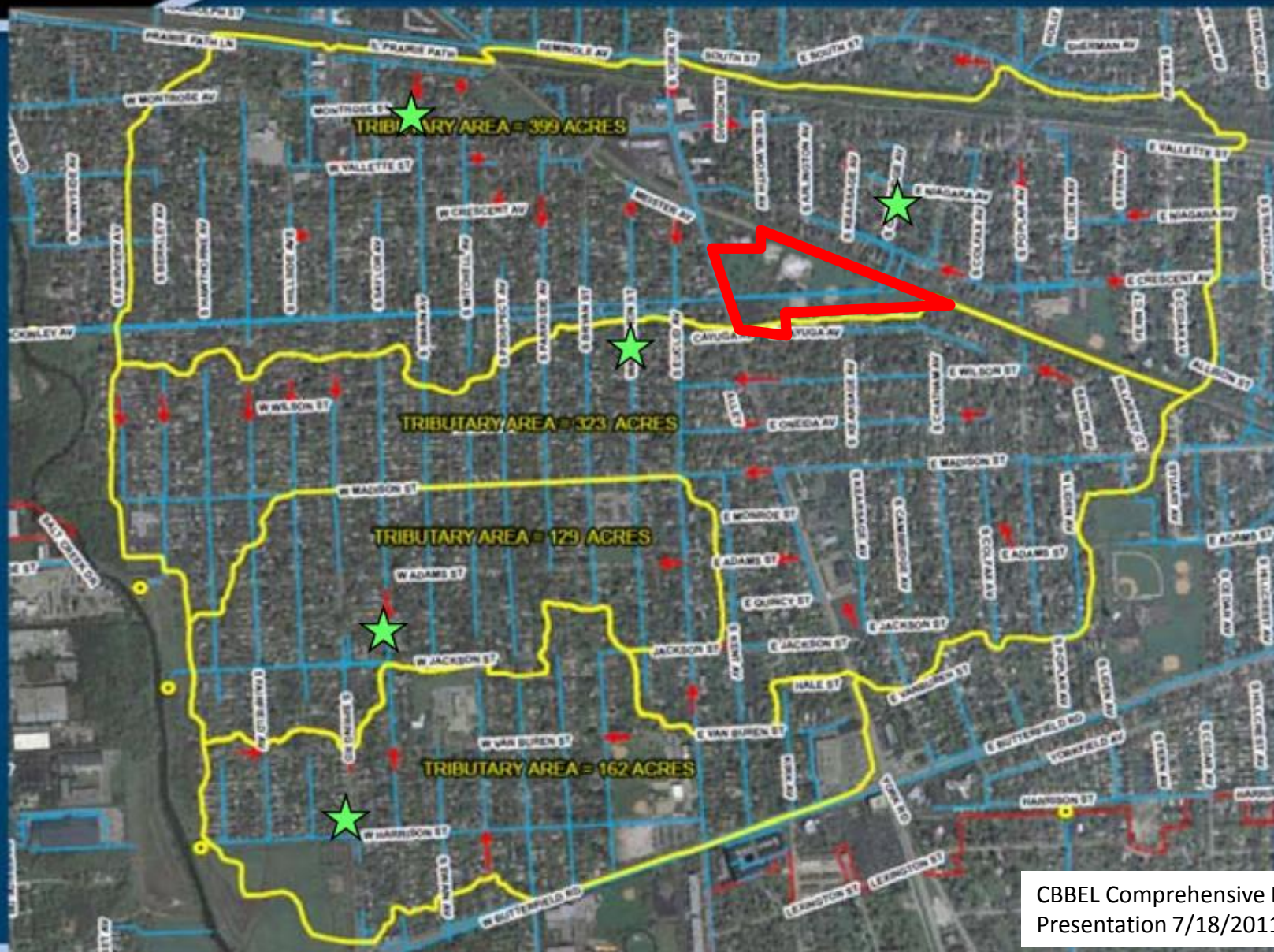


Presented by V3 Companies  
Greg Wolterstorff, P.E.



# Overview of Southwest Study Areas

## North and South Study Areas





**Southwest Study Area (North Side)**  
**XP-SWMM Simulated July 2010 Inundation Area**





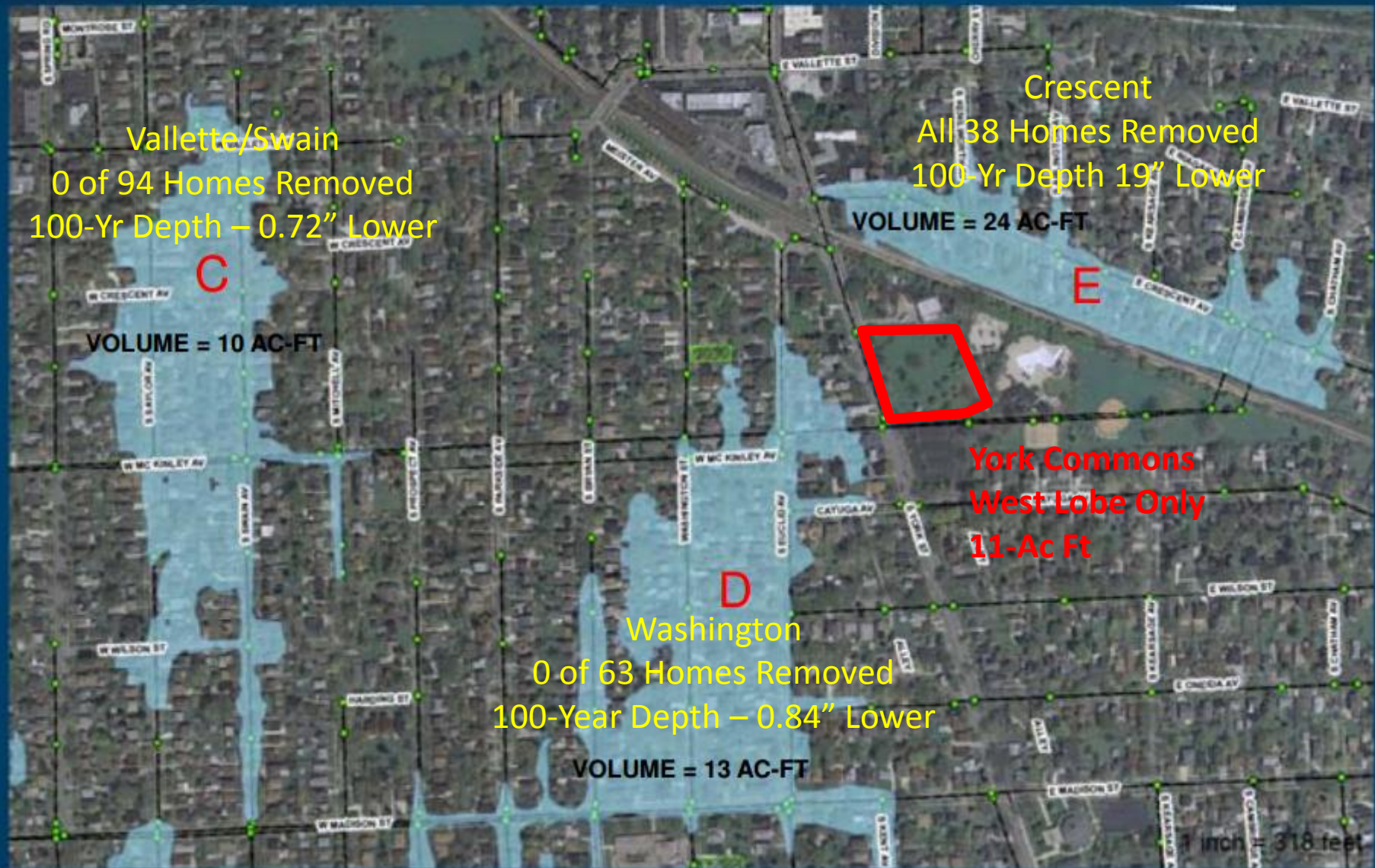
**Southwest Study Area (South Side)**  
**XP-SWMM Simulated July 2010 Inundation Area**





# Southwest Study Area (North Side)

## XP-SWMM Simulated July 2010 Inundation Area



**Table 1a – Homes Removed from Impact Cost Comparison**

Proposed Alternative	Estimated Cost	Homes Removed from 100-Year Flood	Cost Per Home
York Commons – Both Lobes	\$3.2 million	52	\$61,500
York Commons – East Lobe Only	\$1.8 million	14	\$128,500
York Commons – West Lobe Only	\$1.4 million	38	\$36,800
Alternative #2A – Pump Capacity (Washington & Saylor/Jackson)	\$19.2 million	100	\$192,000
Alternative #4 – Pump Capacity (Swain/Vallette)	\$11.5 million	87	\$132,000





# Southwest Study Area (North Side)

## XP-SWMM Simulated July 2010 Inundation Area



**Table 1b – Homes Removed from Impact Cost Comparison**

Proposed Alternative	Estimated Cost	Homes Removed from 100-Year Flood	Cost Per Home
<b>York Commons – Both Lobes</b>	\$3.2 million	52	\$61,500
York Commons – East Lobe Only	\$1.8 million	14	\$128,500
York Commons – West Lobe Only	\$1.4 million	38	\$36,800
Alternative #2A – Pump Capacity (Washington & Saylor/Jackson)	\$19.2 million	100	\$192,000
Alternative #4 – Pump Capacity (Swain/Valette)	\$11.5 million	87	\$132,000





# Overview of Southwest Study Areas

## North and South Study Areas



### Additional Costs

1. McKinley St Sewer –  
9'x5' Box to 10'x5'
2. Washington St Sewer -  
11'x6' Box to 12'x6'
3. 9% Capacity Increase in Two Lift  
Stations
4. Obtain 12 - 18 Ac-Ft of  
Compensatory Volume

Increase Cost = \$600,000 to \$1.5 M  
Plus if Property Acquired = \$3.25 M



**Table 2 – West Lobe & Both Lobes Cost Comparison**

Proposed Alternative	Estimated Cost	Homes Removed from 100-Year Flood	Cost Per Home
York Commons – West Lobe Sewer Expansion Pump Expansion Compensatory Storage	\$22.3 million To \$26.9 million	222*	\$100,500 To \$121,200
York Commons – Both Lobes Sewer Expansion Pump Expansion Compensatory Storage	\$21.0 million To \$22.1 million	222	\$94,600 To \$99,600
York Commons – East Lobe Only	\$1.8 million	14	\$128,500
York Commons – West Lobe Only	\$1.4 million	38	\$36,800

\* Homes Removed - 38 Crescent, 52 Washington, 87 Swain/Vallette, 45 Saylor/Jackson





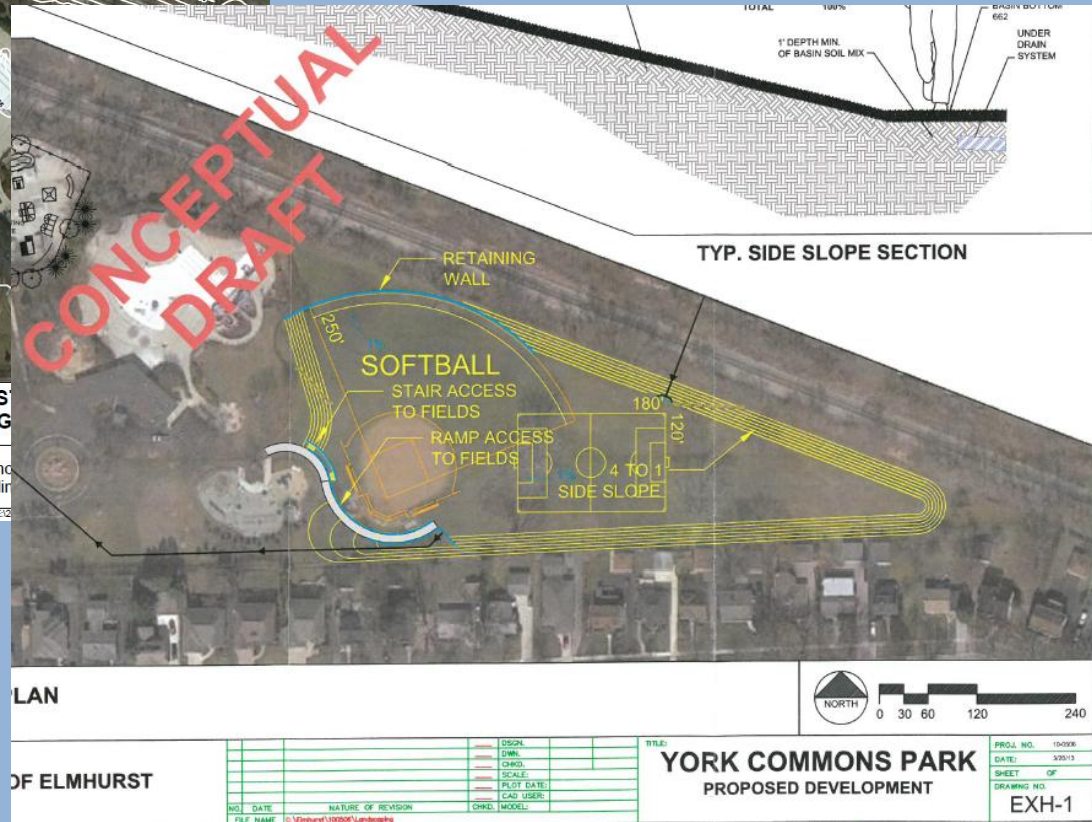
**Table 3 – Madison School Cost Comparison**

Proposed Alternative	Estimated Cost	Homes Removed from 100-Year Flood	Cost Per Home
York Commons – West Lobe Sewer Expansion Pump Expansion Compensatory Storage	\$22.3 million To \$26.9 million	222	\$100,500 To \$121,200
York Commons – West Lobe Sewer Expansion Pump Expansion Compensatory Storage Madison School	\$22.8 million To \$27.2 million	222	\$102,700 To \$122,500
York Commons – Both Lobes Sewer Expansion Pump Expansion Compensatory Storage	\$21.0 million To \$22.1 million	222	\$94,600 To \$99,600
York Commons – Both Lobes Sewer Expansion Pump Expansion Compensatory Storage Madison School	\$22.1 million To \$23.1 million	222	\$99,500 To \$104,000





**Depth of Excavation = 6 Feet**  
**Flood Storage = 11 Acre-Feet**



Presented by V3 Companies  
Greg Wolterstorff, P.E.