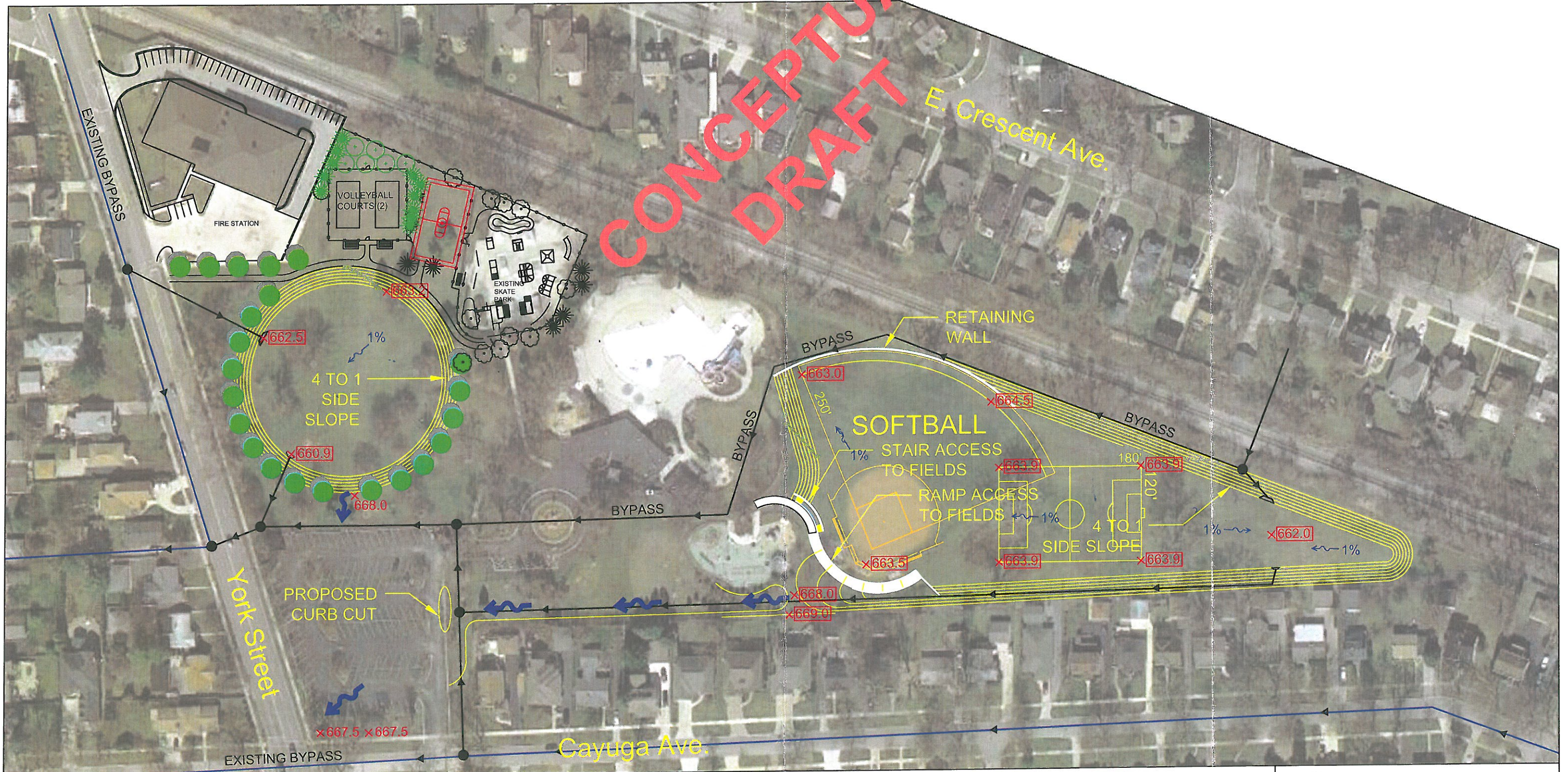


CONCEPTUAL STORM SEWER LAYOUT

CONCEPTUAL DRAFT



YORK COMMONS PARK SITE DEVELOPMENT PLAN

OVER LAND FLOW ROUTE	x664.5 PROPOSED SPOT ELEVATION	NORTH	0 30 60 120 240
EXISTING STORM SEWER	PROPOSED STORM SEWER		
	PROPOSED CONTOUR		

CHRISTOPHER B. BURKE ENGINEERING, LTD.
 9575 W. Higgins Road, Suite 600
 Rosemont, Illinois 60018
 (847) 823-0500

CLIENT:
CITY OF ELMHURST

NO.	DATE	NATURE OF REVISION	CHKD.	MODEL:

FILE NAME: C:\Elmhurst\100508\Landscaping

TITLE:
**YORK COMMONS PARK
 PROPOSED DEVELOPMENT**

PROJ. NO. 10-0506
 DATE: 8/13/14
 SHEET OF
 DRAWING NO.
EXH-1