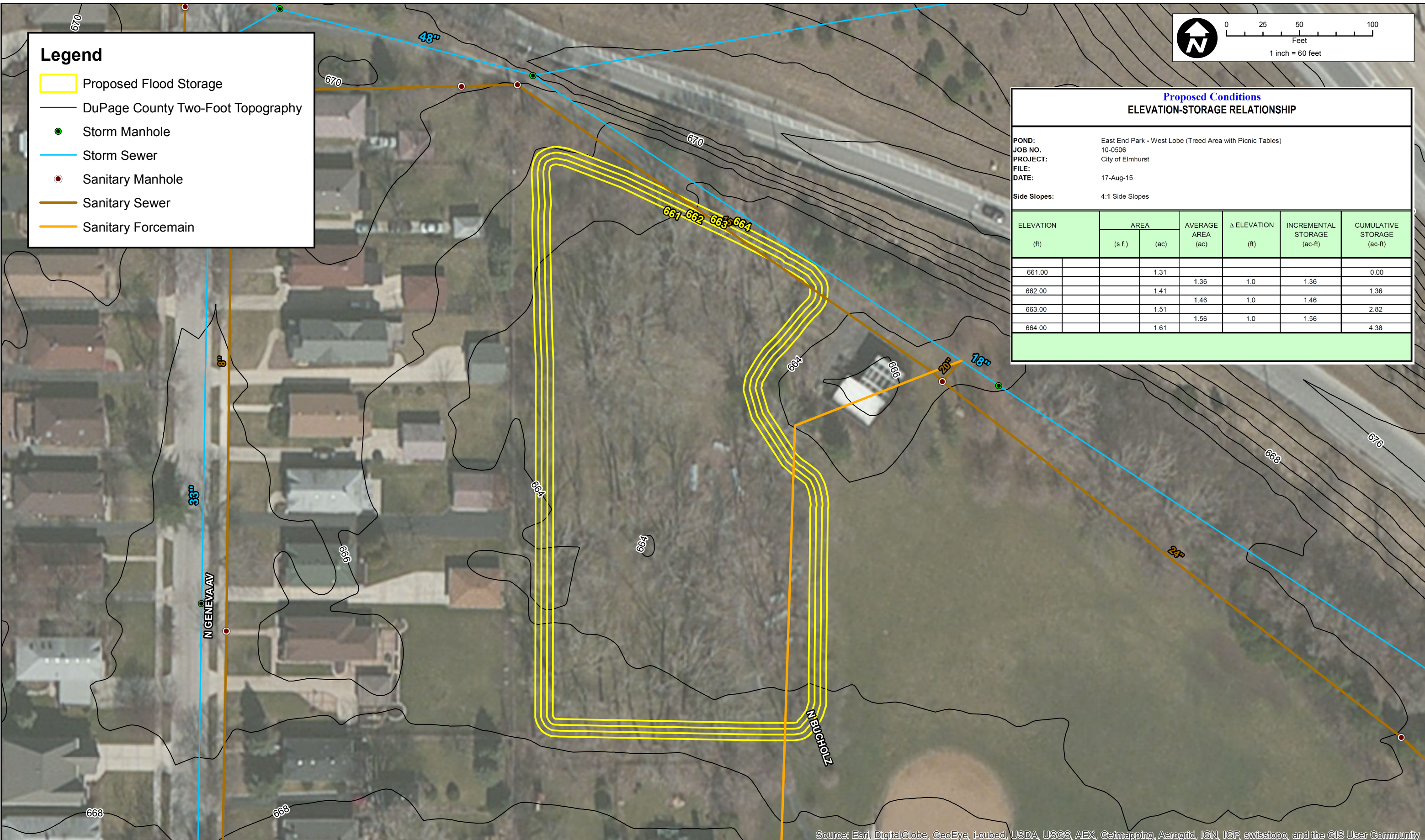


Legend

- Proposed Flood Storage
- DuPage County Two-Foot Topography
- Storm Manhole
- Storm Sewer
- Sanitary Manhole
- Sanitary Sewer
- Sanitary Forcemain

Proposed Conditions						
ELEVATION-STORAGE RELATIONSHIP						
POND:		East End Park - West Lobe (Treed Area with Picnic Tables)				
JOB NO.:		10-0506				
PROJECT:		City of Elmhurst				
FILE:						
DATE:		17-Aug-15				
Side Slopes:		4:1 Side Slopes				
ELEVATION (ft)	AREA (s.f.) (ac)		AVERAGE AREA (ac)	Δ ELEVATION (ft)	INCREMENTAL STORAGE (ac-ft)	CUMULATIVE STORAGE (ac-ft)
661.00		1.31	1.36	1.0	1.36	0.00
662.00		1.41	1.46	1.0	1.46	1.36
663.00		1.51	1.56	1.0	1.56	2.82
664.00		1.61				4.38



Source: Esri, DigitalGlobe, GeoEye, i-cubed, USDA, USGS, AEX, Getmapping, Aerogrid, IGN, IGP, swisstopo, and the GIS User Community

CHRISTOPHER B. BURKE ENGINEERING LTD.
 9575 West Higgins Road, Suite 600
 Rosemont, Illinois 60018
 (847) 823-0500

CLIENT:

CITY OF ELMHURST

NO.	DATE	NATURE OF REVISION	CHKD.	MODEL

TITLE:

**EAST END PARK - WESTERN LOBE
CONCEPTUAL GRADING PLAN**

PROJ. NO. 14-0410

DATE:

SHEET 1 OF 1

DRAWING NO.

EXH