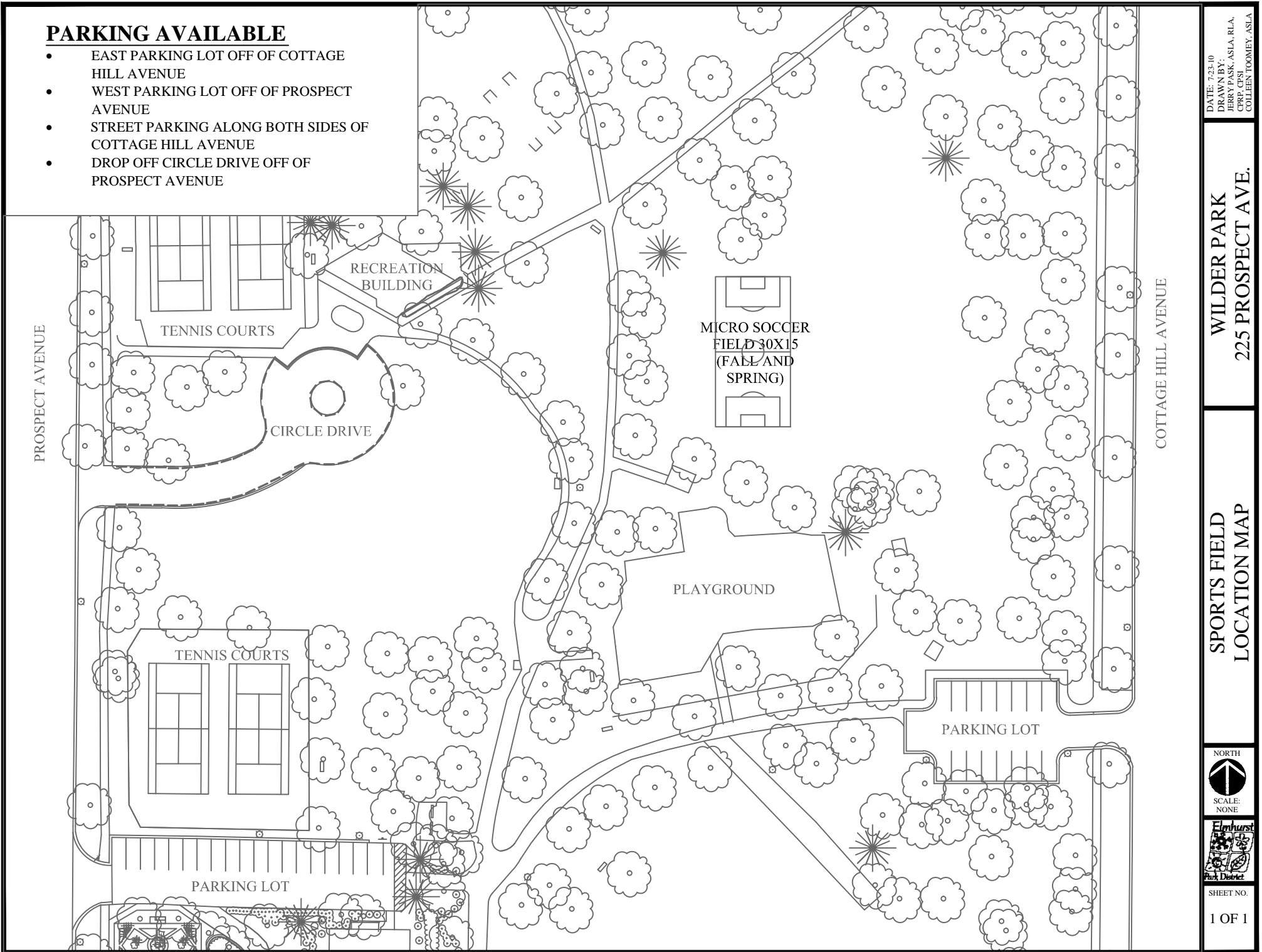


## PARKING AVAILABLE

- EAST PARKING LOT OFF OF COTTAGE HILL AVENUE
- WEST PARKING LOT OFF OF PROSPECT AVENUE
- STREET PARKING ALONG BOTH SIDES OF COTTAGE HILL AVENUE
- DROP OFF CIRCLE DRIVE OFF OF PROSPECT AVENUE



DATE: 02.10  
DRAWN BY: JERRY PASK, ASLA, RLA  
CRRP, CPSI  
COLLEEN TOOMEY, ASLA

WILDER PARK  
225 PROSPECT AVE.

SPORTS FIELD  
LOCATION MAP



SHEET NO.

1 OF 1